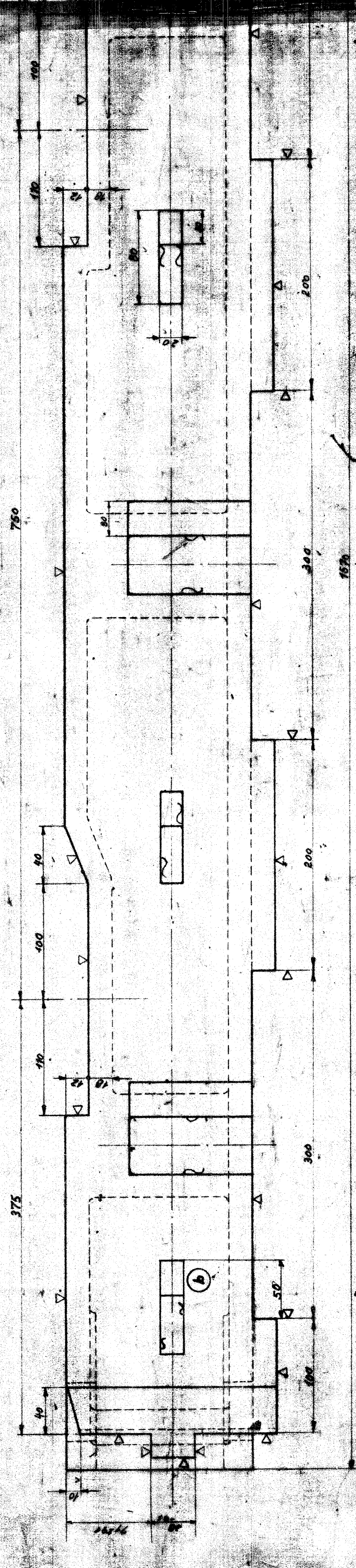
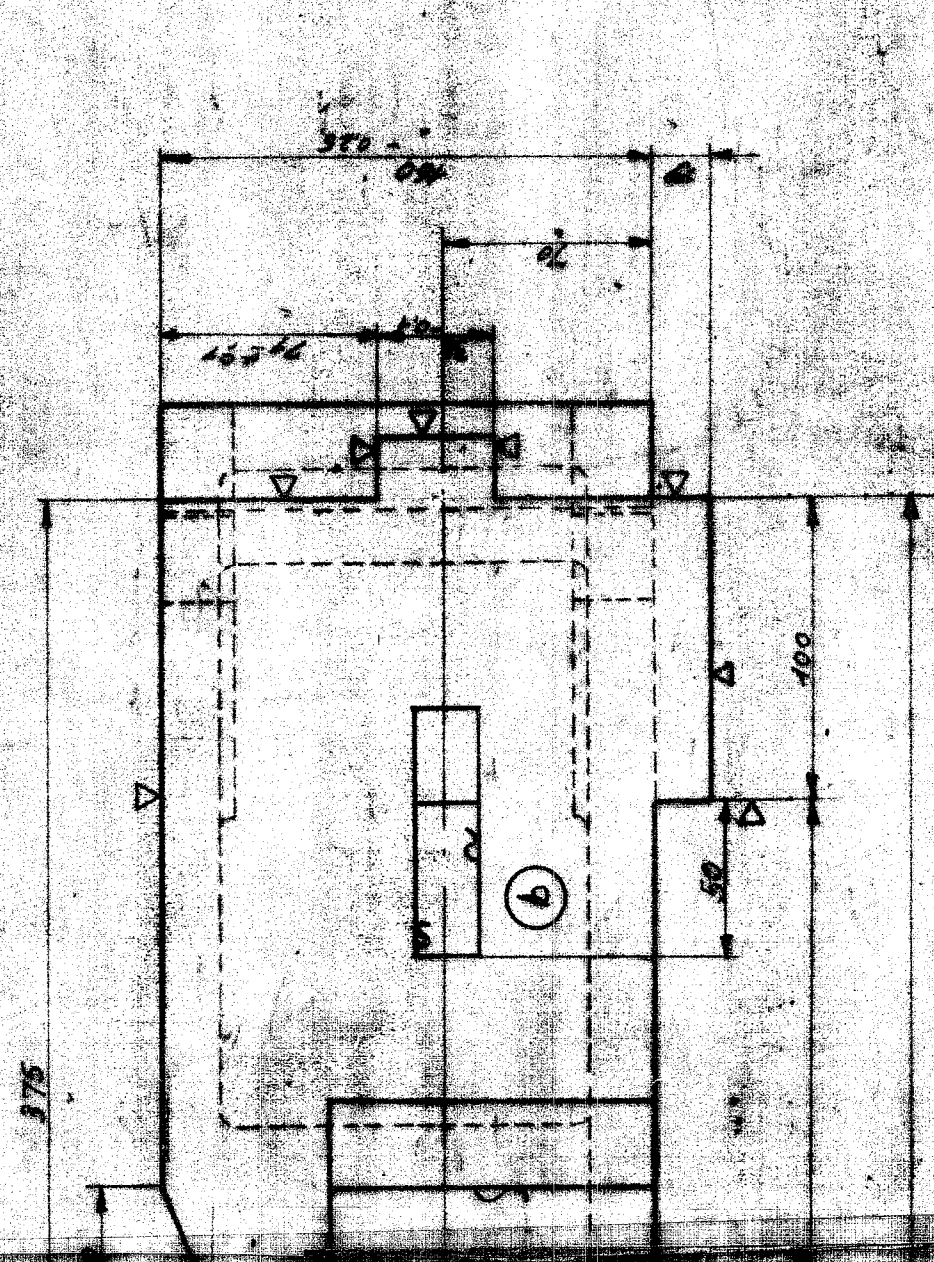
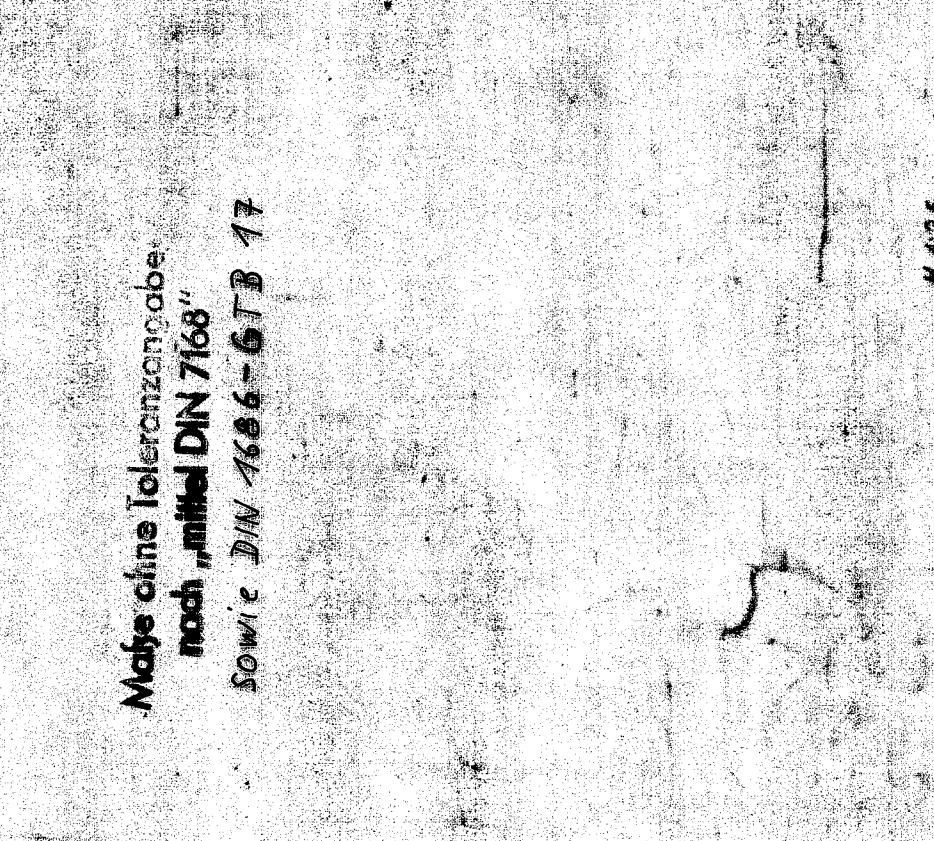
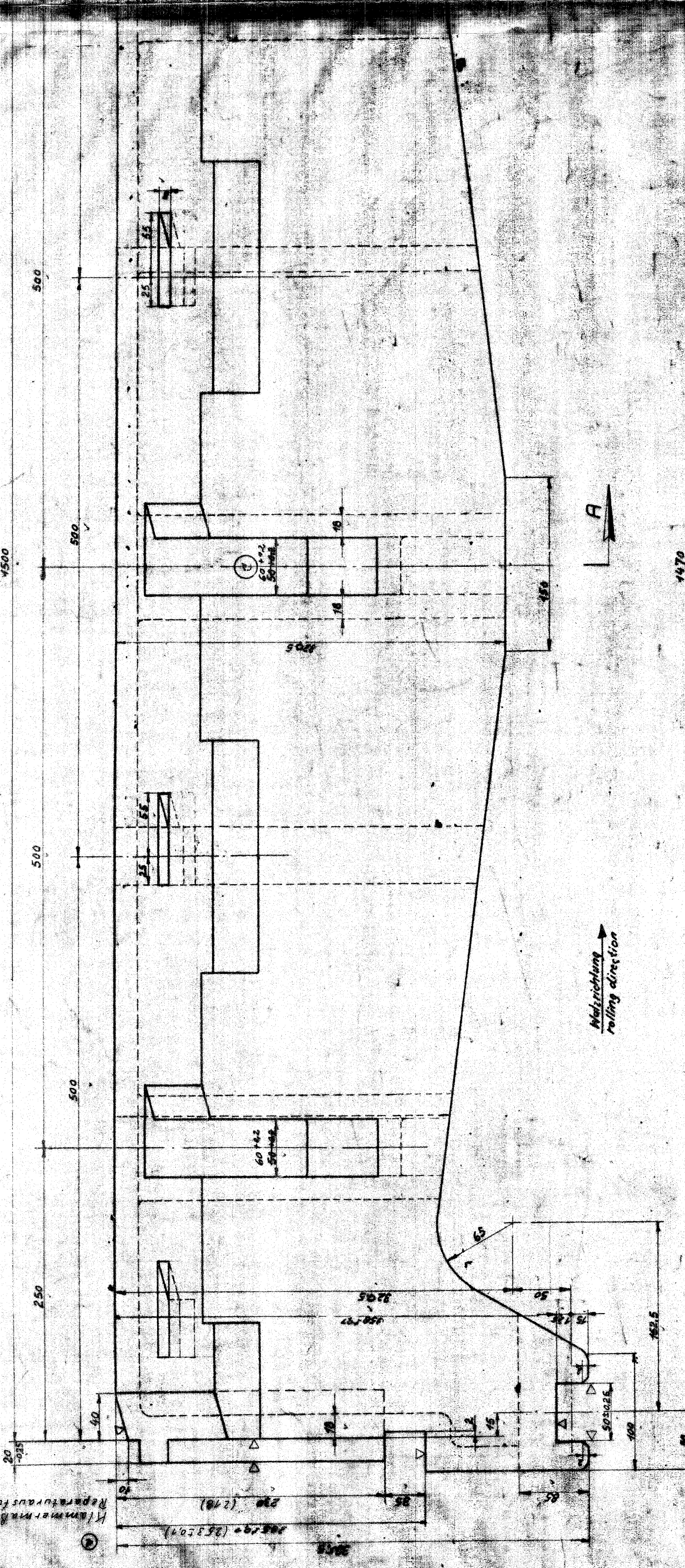
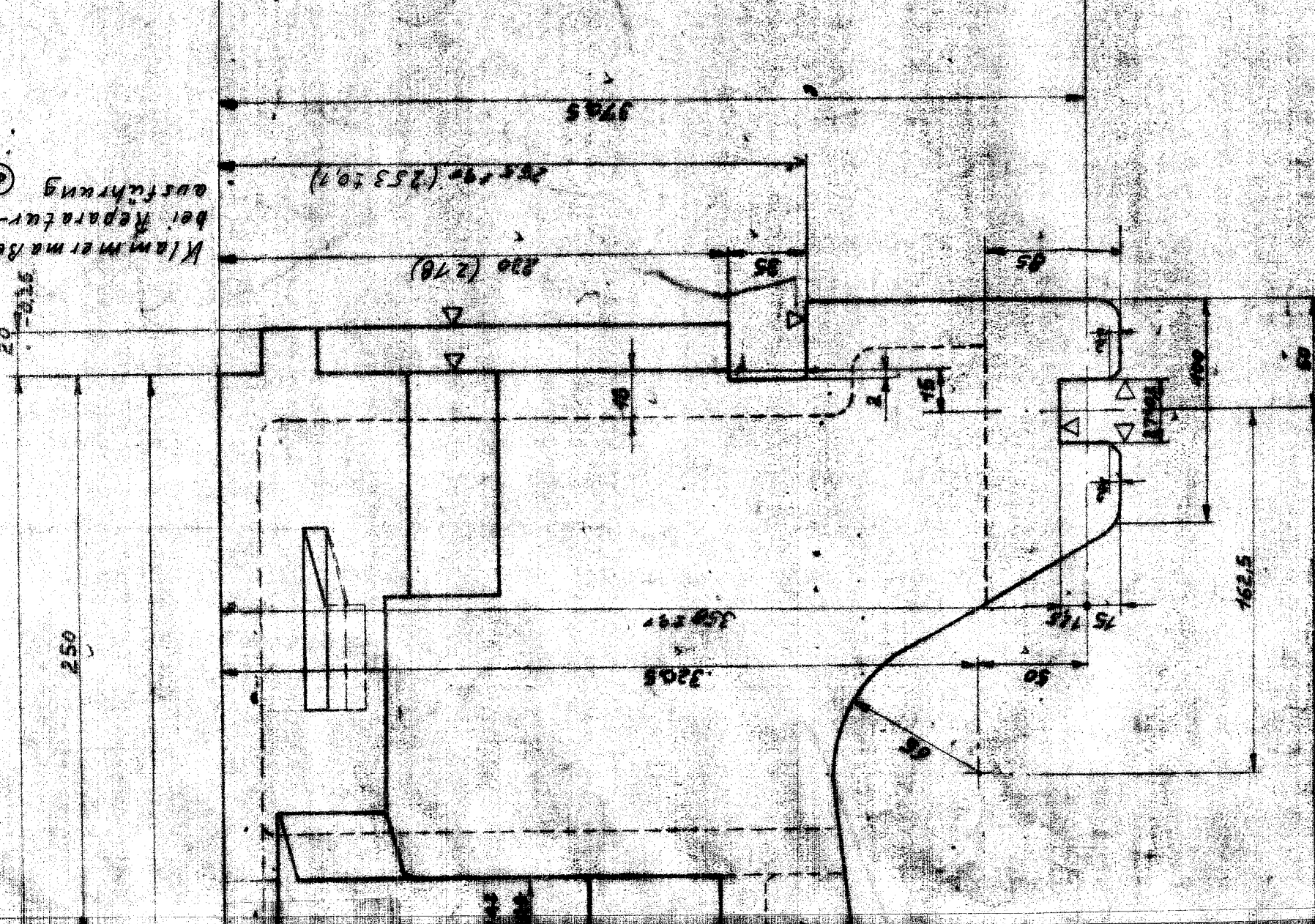
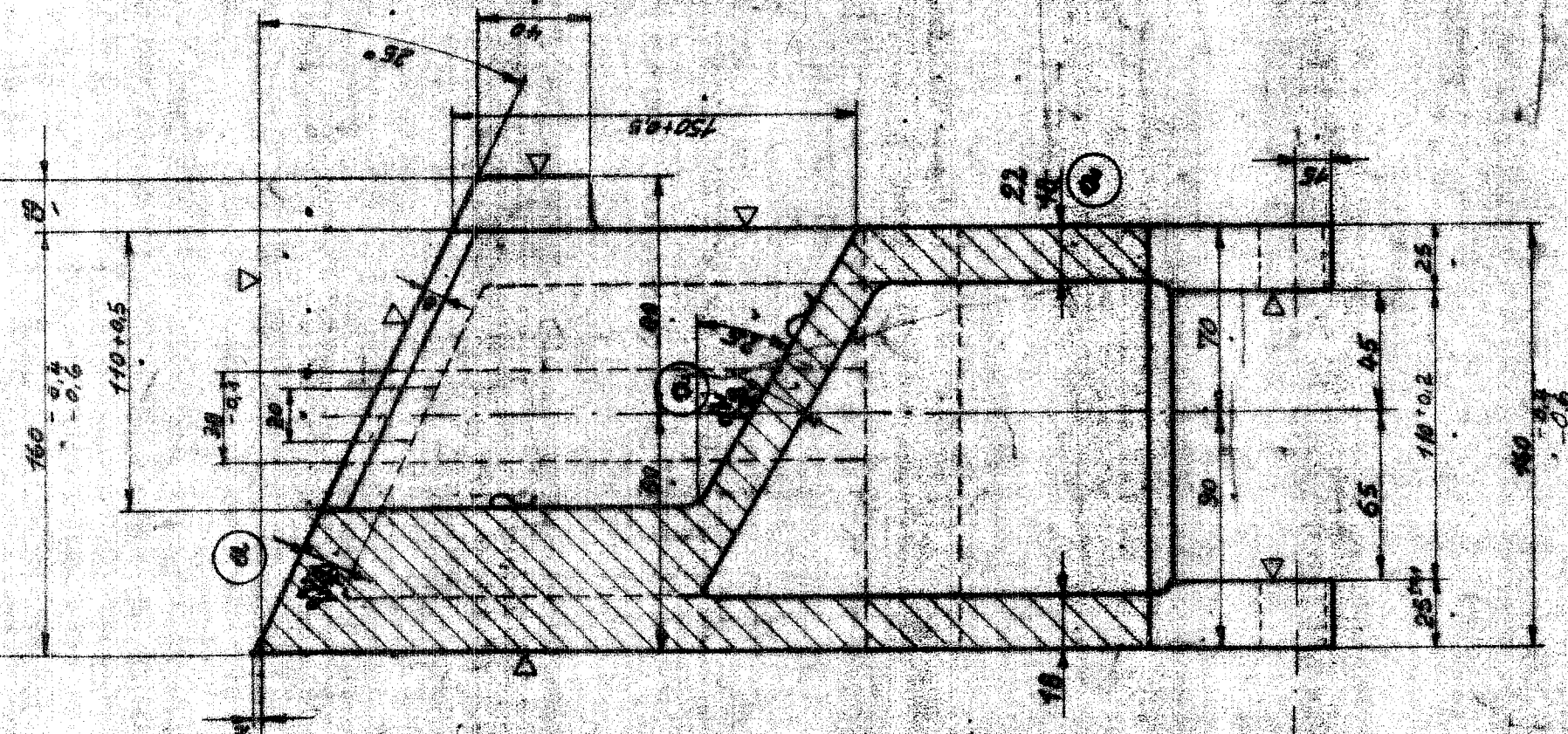


LW 37729

Teil 1 Auswerfischer GG-25 LU37729  
 Entwurf-Nr. 1111  
 Zeichnung-Nr. 1111

Teil 1 Auswerfischer GG-25 LU37729  
 Entwurf-Nr. 1111  
 Zeichnung-Nr. 1111

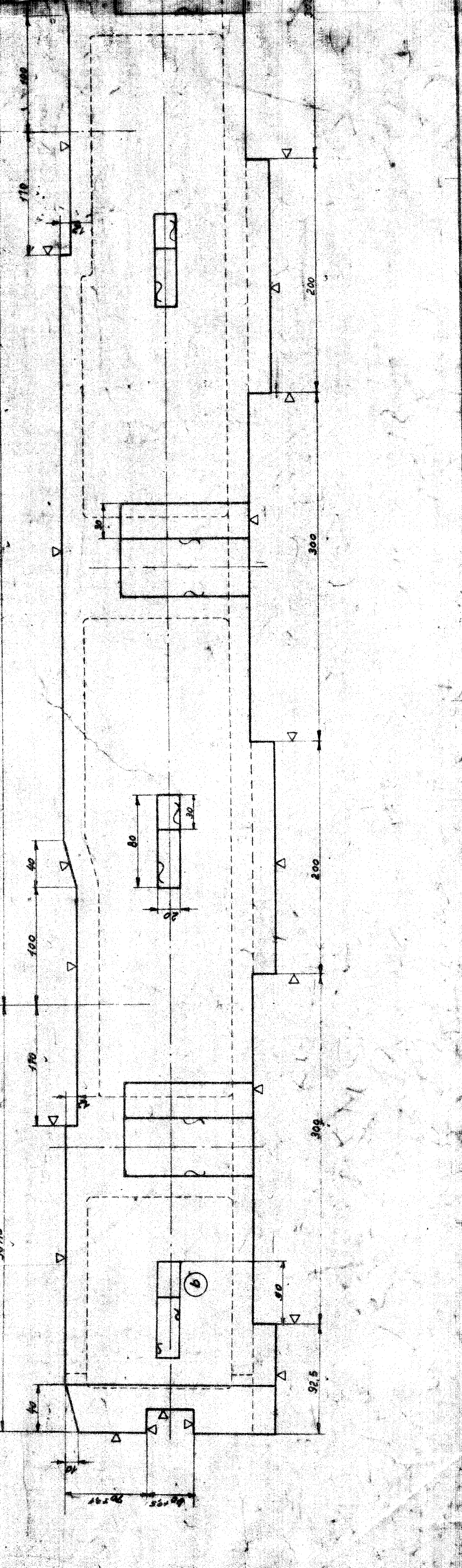
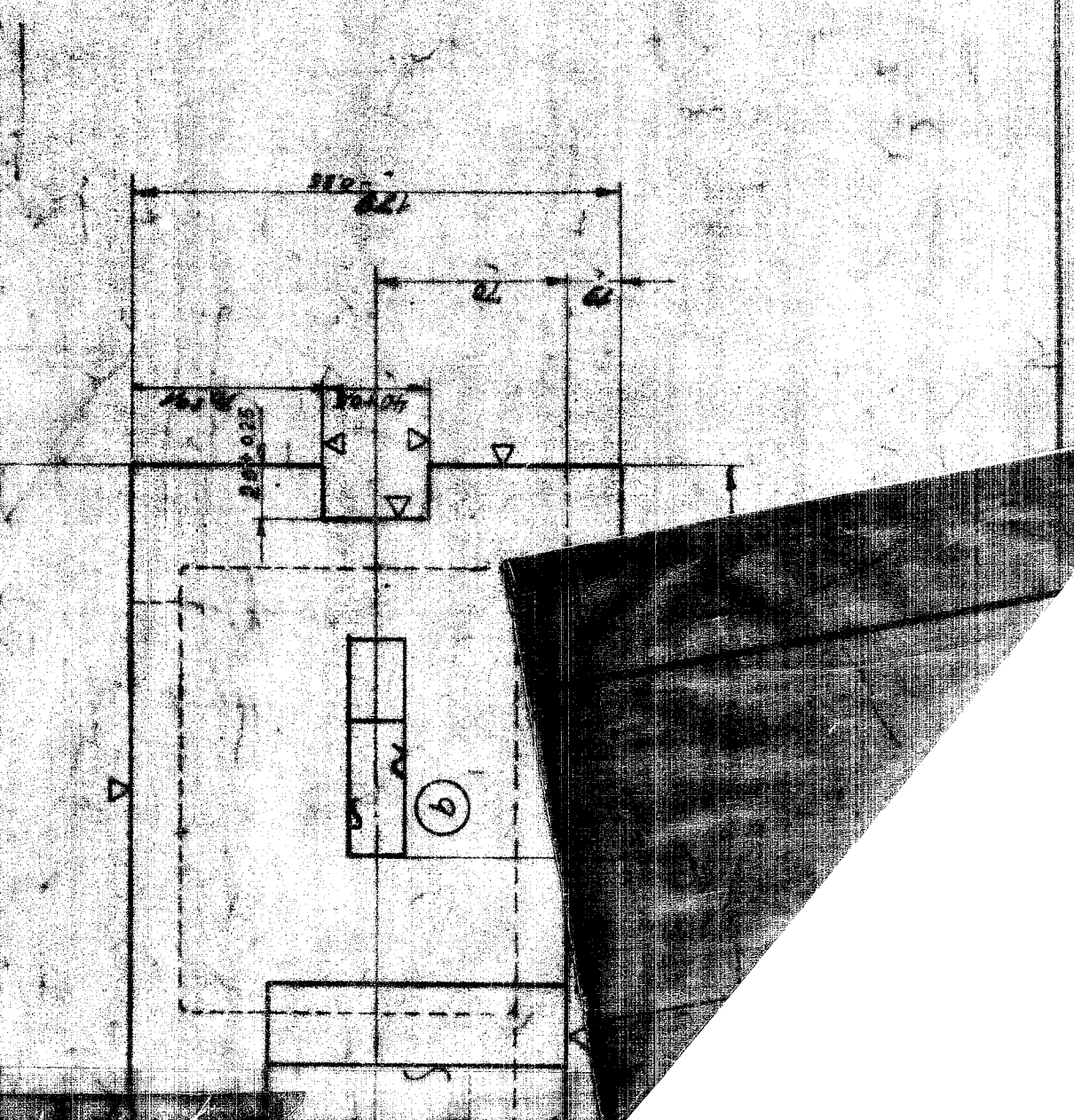
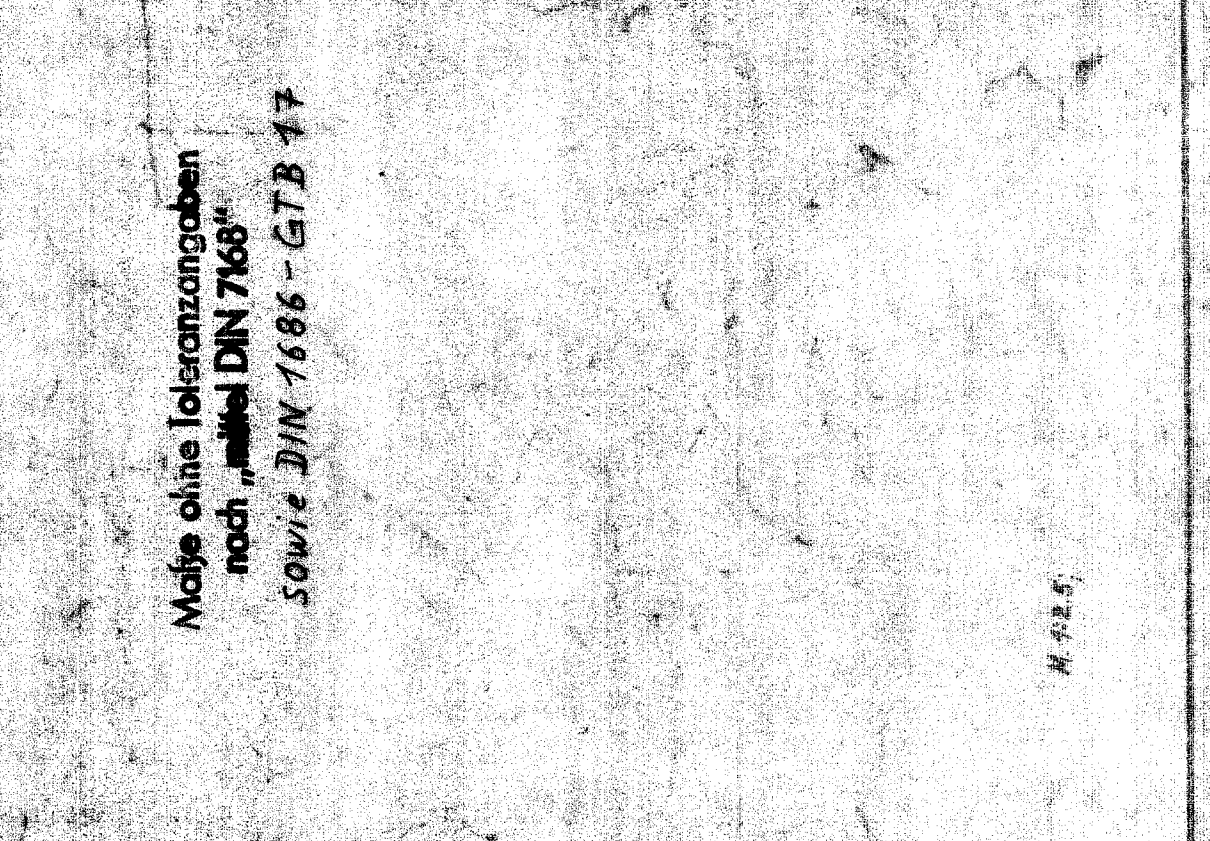
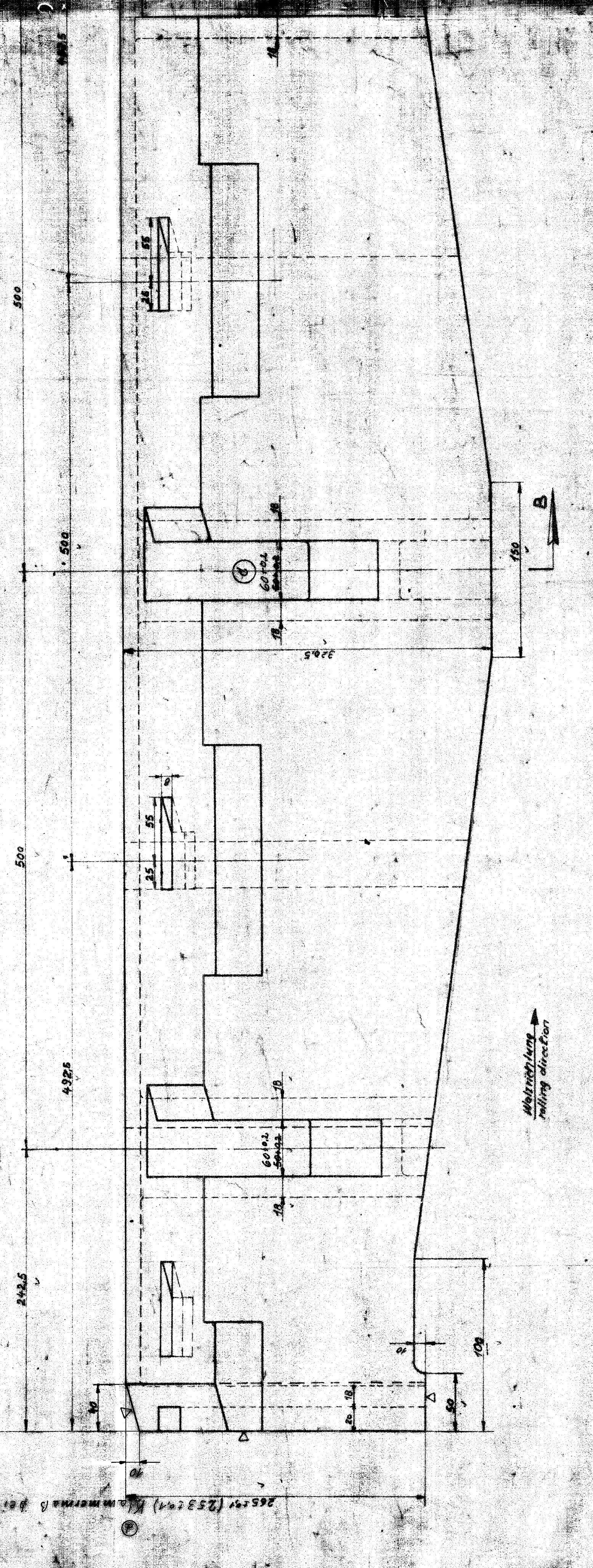
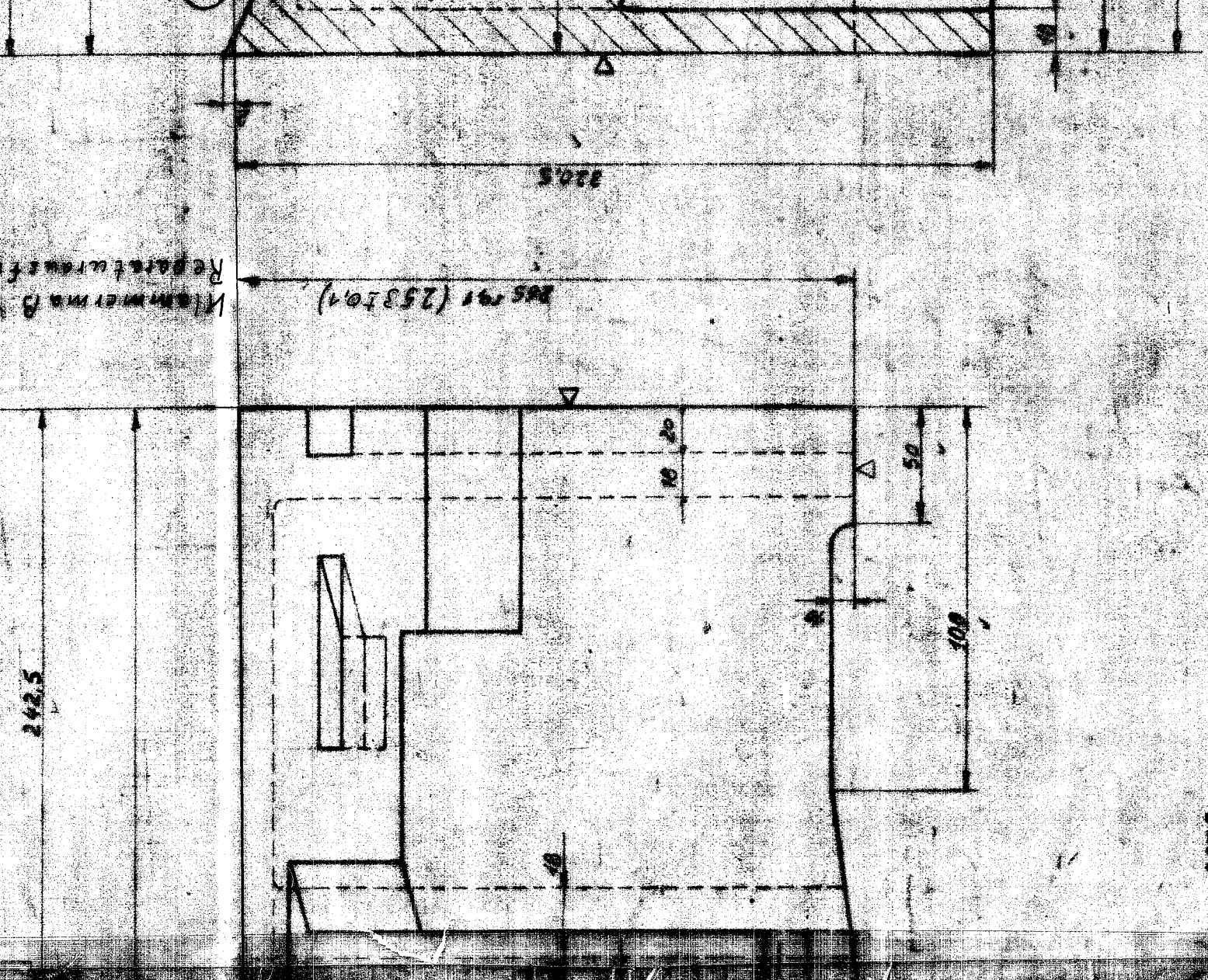
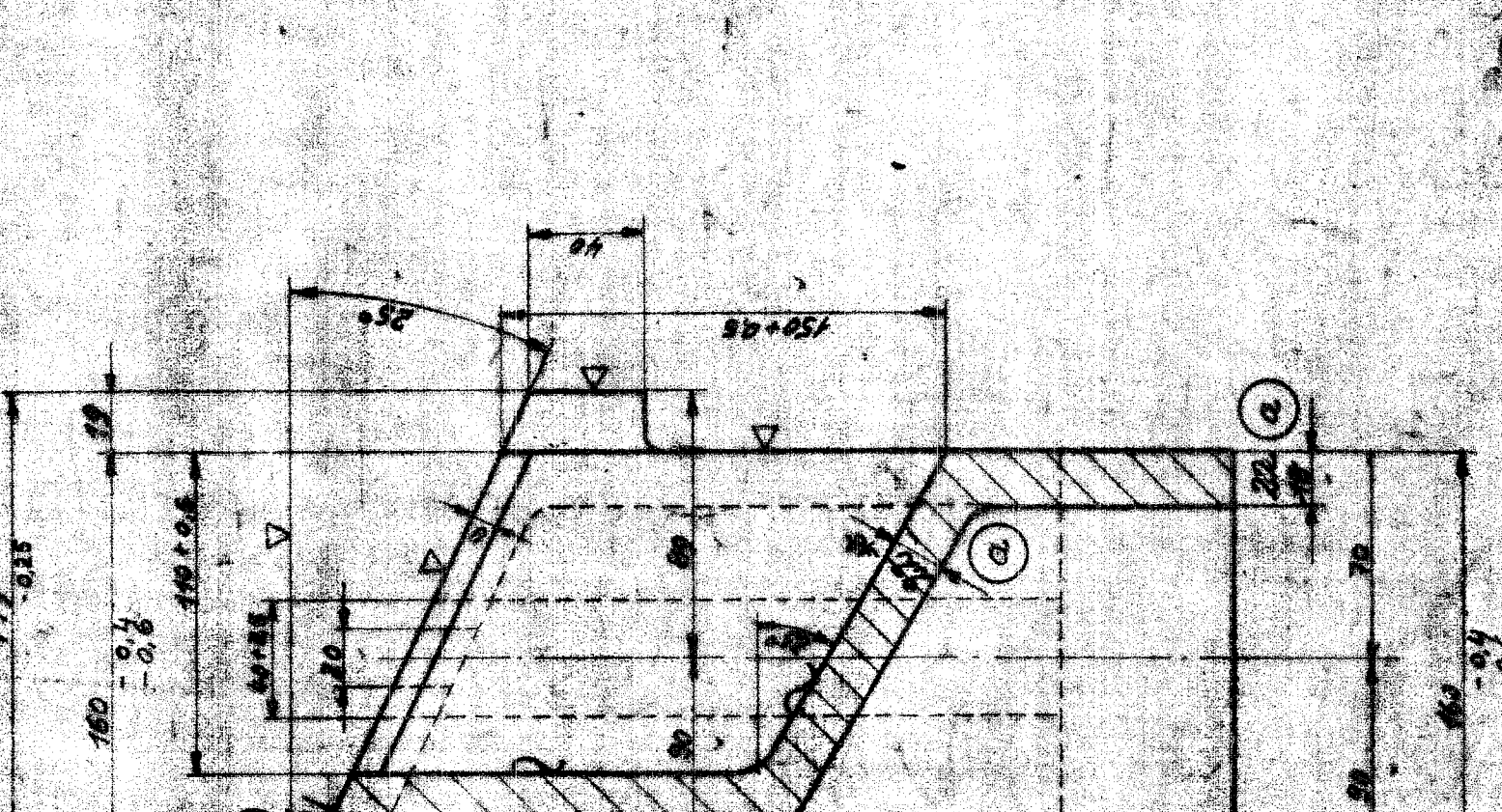
|     |      |
|-----|------|
| 18  | 5769 |
| 19  | 5770 |
| 20  | 5771 |
| 21  | 5772 |
| 22  | 5773 |
| 23  | 5774 |
| 24  | 5775 |
| 25  | 5776 |
| 26  | 5777 |
| 27  | 5778 |
| 28  | 5779 |
| 29  | 5780 |
| 30  | 5781 |
| 31  | 5782 |
| 32  | 5783 |
| 33  | 5784 |
| 34  | 5785 |
| 35  | 5786 |
| 36  | 5787 |
| 37  | 5788 |
| 38  | 5789 |
| 39  | 5790 |
| 40  | 5791 |
| 41  | 5792 |
| 42  | 5793 |
| 43  | 5794 |
| 44  | 5795 |
| 45  | 5796 |
| 46  | 5797 |
| 47  | 5798 |
| 48  | 5799 |
| 49  | 5800 |
| 50  | 5801 |
| 51  | 5802 |
| 52  | 5803 |
| 53  | 5804 |
| 54  | 5805 |
| 55  | 5806 |
| 56  | 5807 |
| 57  | 5808 |
| 58  | 5809 |
| 59  | 5810 |
| 60  | 5811 |
| 61  | 5812 |
| 62  | 5813 |
| 63  | 5814 |
| 64  | 5815 |
| 65  | 5816 |
| 66  | 5817 |
| 67  | 5818 |
| 68  | 5819 |
| 69  | 5820 |
| 70  | 5821 |
| 71  | 5822 |
| 72  | 5823 |
| 73  | 5824 |
| 74  | 5825 |
| 75  | 5826 |
| 76  | 5827 |
| 77  | 5828 |
| 78  | 5829 |
| 79  | 5830 |
| 80  | 5831 |
| 81  | 5832 |
| 82  | 5833 |
| 83  | 5834 |
| 84  | 5835 |
| 85  | 5836 |
| 86  | 5837 |
| 87  | 5838 |
| 88  | 5839 |
| 89  | 5840 |
| 90  | 5841 |
| 91  | 5842 |
| 92  | 5843 |
| 93  | 5844 |
| 94  | 5845 |
| 95  | 5846 |
| 96  | 5847 |
| 97  | 5848 |
| 98  | 5849 |
| 99  | 5850 |
| 100 | 5851 |



**Achtung: Modellschneiter.**  
 Bei Montageprüfung von Teil Nr. 2 Modell zu prüfen und nach die Auswerfischer nach Z.Nr. 2 37729 Teil Nr. 2 nach dieser Maßlinie abgelesen werden müssen.  
**Metel Wood - pattern maker.**  
 In preparation of metal with respect to parts made & made should be designed so that they ejector, otherwise they are 2 37729, part two 2, could be copy to their pattern.

Reparaturausführung z. 00239/14.933

Reparaturausführung z. 00239/14.933



39'E

**DEMAG**  
 Auswerfischer  
 zum Anheben von Lasten  
 mit einer Hubhöhe von 100 m

LW 37729 d

|     |       |     |     |
|-----|-------|-----|-----|
| 1   | 65-25 | 100 | 100 |
| 2   | 65-25 | 100 | 100 |
| 3   | 65-25 | 100 | 100 |
| 4   | 65-25 | 100 | 100 |
| 5   | 65-25 | 100 | 100 |
| 6   | 65-25 | 100 | 100 |
| 7   | 65-25 | 100 | 100 |
| 8   | 65-25 | 100 | 100 |
| 9   | 65-25 | 100 | 100 |
| 10  | 65-25 | 100 | 100 |
| 11  | 65-25 | 100 | 100 |
| 12  | 65-25 | 100 | 100 |
| 13  | 65-25 | 100 | 100 |
| 14  | 65-25 | 100 | 100 |
| 15  | 65-25 | 100 | 100 |
| 16  | 65-25 | 100 | 100 |
| 17  | 65-25 | 100 | 100 |
| 18  | 65-25 | 100 | 100 |
| 19  | 65-25 | 100 | 100 |
| 20  | 65-25 | 100 | 100 |
| 21  | 65-25 | 100 | 100 |
| 22  | 65-25 | 100 | 100 |
| 23  | 65-25 | 100 | 100 |
| 24  | 65-25 | 100 | 100 |
| 25  | 65-25 | 100 | 100 |
| 26  | 65-25 | 100 | 100 |
| 27  | 65-25 | 100 | 100 |
| 28  | 65-25 | 100 | 100 |
| 29  | 65-25 | 100 | 100 |
| 30  | 65-25 | 100 | 100 |
| 31  | 65-25 | 100 | 100 |
| 32  | 65-25 | 100 | 100 |
| 33  | 65-25 | 100 | 100 |
| 34  | 65-25 | 100 | 100 |
| 35  | 65-25 | 100 | 100 |
| 36  | 65-25 | 100 | 100 |
| 37  | 65-25 | 100 | 100 |
| 38  | 65-25 | 100 | 100 |
| 39  | 65-25 | 100 | 100 |
| 40  | 65-25 | 100 | 100 |
| 41  | 65-25 | 100 | 100 |
| 42  | 65-25 | 100 | 100 |
| 43  | 65-25 | 100 | 100 |
| 44  | 65-25 | 100 | 100 |
| 45  | 65-25 | 100 | 100 |
| 46  | 65-25 | 100 | 100 |
| 47  | 65-25 | 100 | 100 |
| 48  | 65-25 | 100 | 100 |
| 49  | 65-25 | 100 | 100 |
| 50  | 65-25 | 100 | 100 |
| 51  | 65-25 | 100 | 100 |
| 52  | 65-25 | 100 | 100 |
| 53  | 65-25 | 100 | 100 |
| 54  | 65-25 | 100 | 100 |
| 55  | 65-25 | 100 | 100 |
| 56  | 65-25 | 100 | 100 |
| 57  | 65-25 | 100 | 100 |
| 58  | 65-25 | 100 | 100 |
| 59  | 65-25 | 100 | 100 |
| 60  | 65-25 | 100 | 100 |
| 61  | 65-25 | 100 | 100 |
| 62  | 65-25 | 100 | 100 |
| 63  | 65-25 | 100 | 100 |
| 64  | 65-25 | 100 | 100 |
| 65  | 65-25 | 100 | 100 |
| 66  | 65-25 | 100 | 100 |
| 67  | 65-25 | 100 | 100 |
| 68  | 65-25 | 100 | 100 |
| 69  | 65-25 | 100 | 100 |
| 70  | 65-25 | 100 | 100 |
| 71  | 65-25 | 100 | 100 |
| 72  | 65-25 | 100 | 100 |
| 73  | 65-25 | 100 | 100 |
| 74  | 65-25 | 100 | 100 |
| 75  | 65-25 | 100 | 100 |
| 76  | 65-25 | 100 | 100 |
| 77  | 65-25 | 100 | 100 |
| 78  | 65-25 | 100 | 100 |
| 79  | 65-25 | 100 | 100 |
| 80  | 65-25 | 100 | 100 |
| 81  | 65-25 | 100 | 100 |
| 82  | 65-25 | 100 | 100 |
| 83  | 65-25 | 100 | 100 |
| 84  | 65-25 | 100 | 100 |
| 85  | 65-25 | 100 | 100 |
| 86  | 65-25 | 100 | 100 |
| 87  | 65-25 | 100 | 100 |
| 88  | 65-25 | 100 | 100 |
| 89  | 65-25 | 100 | 100 |
| 90  | 65-25 | 100 | 100 |
| 91  | 65-25 | 100 | 100 |
| 92  | 65-25 | 100 | 100 |
| 93  | 65-25 | 100 | 100 |
| 94  | 65-25 | 100 | 100 |
| 95  | 65-25 | 100 | 100 |
| 96  | 65-25 | 100 | 100 |
| 97  | 65-25 | 100 | 100 |
| 98  | 65-25 | 100 | 100 |
| 99  | 65-25 | 100 | 100 |
| 100 | 65-25 | 100 | 100 |